

RSSAA 2022-23 COVID Policies

August 29, 2022

The Rudolf Steiner School of Ann Arbor seeks to ensure that all students, faculty, staff and families are able to fully engage in a rich curriculum and community life, while also responsibly ensuring that COVID precautions are in place across our programs. We will start the year with the policies below and will adjust and update as our experiences and any directives from the State and County Health Departments require. We will always include all community members – parents, guardians, faculty and staff – in our decision-making process around changes.

For the 2022-23 School Year the following COVID-19 Expectations will be in place:

A. Masks:

- a. Masks will be optional both inside and outside on both campuses, except in the exceptional situations listed below.
- b. If Washtenaw County is in CDC Community COVID level is “High”, masks will be encouraged inside.
- c. Anyone who returns to school before day 10 after a positive COVID-19 test, at least a five day quarantine, and then a negative COVID-19 rapid antigen test will be expected to wear a mask indoors for ten calendar days from the date of the positive test (see D. below).
- d. Anyone exposed to COVID-19 (see E. below) will be expected to wear a mask indoors for ten calendar days from the date of exposure.
- e. When needed, masks should ideally be equivalent to N95 (KN95) masks, and at a minimum have two or more layers of washable, breathable fabric, or surgical, multi-layer disposable paper masks; completely cover the nose and mouth; fit snugly against the side of the face and have no gaps.

B. COVID-19 Mitigation Strategies:

- a. Social Distancing: During the 2022-23 School Year RSSAA will return to our conventional delivery of school curriculum and experiences. This means the following:
 - i. Lower School Classes (Early Childhood Program and Grades 1 – 8) will be allowed to mix outside during recess and for occasional festival and performance events. Middle School students will be mixed for music classes.
 - ii. High School Students will be allowed to mix indoors including at lunch.
 - iii. Across both campuses we will be using all regular school spaces and classrooms.
 1. The Parent Spot will reopen at the Lower School campus to allow parents to meet throughout the school day
 2. High School classes will take place in the classroom spaces as they did pre-pandemic. Each grade will occupy a main lesson classroom during a

block and switch to a new room at the end of the block. Specialist classes will occur in consistent classroom spaces throughout the year that may be used by other classes during the school day. The grades will not have individual homerooms. Students will not be allowed to eat in classroom spaces but will use the commons and outside areas. The Assembly Hall will no longer be used for regular classes, but will revert to a music and drama practice space.

- iv. Parents are again welcome in both buildings throughout the school day – as normal we ask that parents check in at the front office and allow school employees to retrieve students from classrooms for you.
- v. This year we will not be offering any remote education options. Students who have COVID will be supported as all ill students are. They will be encouraged to take time off to recover and will work out an individual plan (depending on the grade and subject) with their teachers upon their return. We will not be implementing a quarantine or test out of quarantine program this year, so all exposed students (except those with exposures in their own homes where the coordinator and parents agree that the student cannot minimize the exposure) will be able to attend school while wearing a mask (see section E below). This means that we will not be streaming classes in the Middle and High School, or providing work packets in the Lower School.
- vi. We will be offering both Before and Aftercare programs at the Lower School and there will be an After School program at the High School.

b. Cleaning and air circulation

- i. During the first two years of the pandemic the school has upgraded our air circulation and cleaning protocols – these will all be continued for the 2022-23 school year
- ii. Students will continue to be encouraged to regularly wash their hands with soap and water and to use hand sanitizer when appropriate.

C. Expectations When Potential Symptoms of COVID-19 Develop

- a. The school will not be using any symptom-tracking app during the 2022-23 School Year. However, all RSSAA community members are asked to monitor themselves, and their children, for any symptoms of COVID-19 and to be conservative when there is any concern about possible COVID infection.
- b. If students have potential symptoms of COVID-19, parents should administer a home rapid antigen COVID-19 test or a COVID-19 PCR test. They should not bring students back to school unless the test is negative AND symptoms are improved.
- c. If faculty or staff have potential symptoms of COVID-19, they should take a home rapid antigen COVID-19 test or a COVID-19 PCR test. Faculty and staff should not return to school unless the test is negative AND symptoms are improved.

D. Procedure for confirmed COVID-19 cases

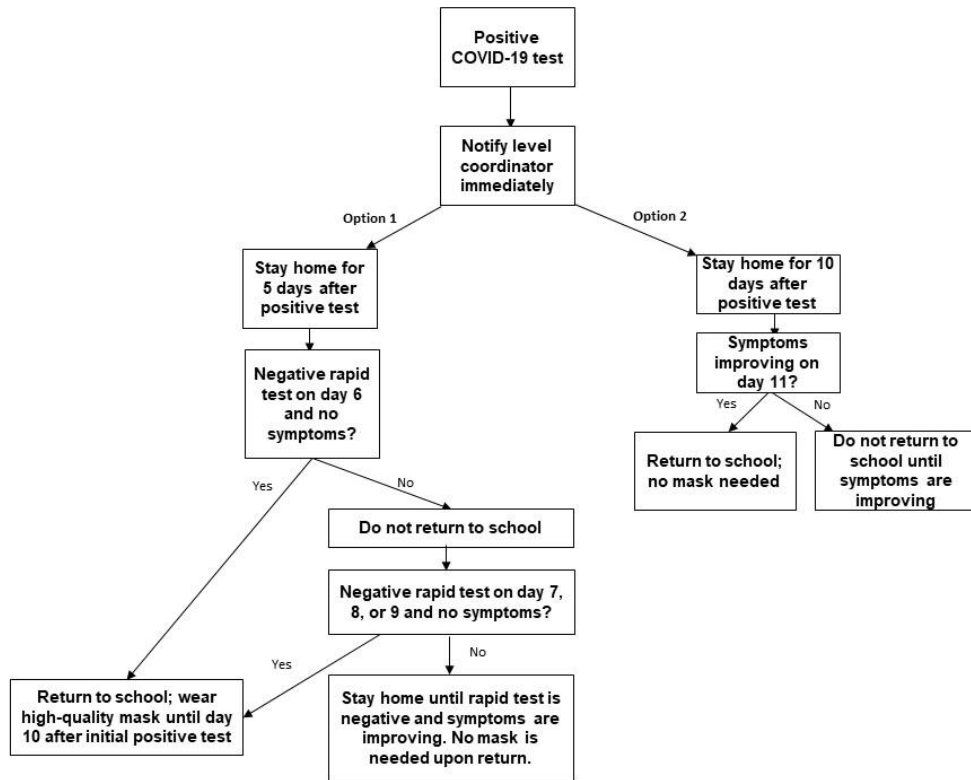
a. Procedure for notifying school

- i. Parents of any student who tests positive for COVID-19 should complete the ParentSquare COVID Exposure/Case Reporting Form and their Level Coordinator will be in contact as soon as possible on the next regular school day. This form is accessible through the “Links” tab on your Parent Square App (under EXPLORE). Parents should keep the positive-testing student, and any family members also attending RSSAA, home until the conversation with the Level Coordinator is complete and a plan is in place. Full instructions on this will be shared before the first day of school.
- ii. Any faculty or staff member who tests positive for COVID-19 should immediately contact their Level Coordinator, using email and a text, to inform them and start the response process. Faculty and staff should stay home until the conversation with the Level Coordinator is complete and a plan is in place.

b. Procedure for returning to school: Any student, faculty or staff member who tests positive for COVID-19 will have two options. These options are shown in the flow chart below.

- i. Option 1: stay home for a minimum of 5 days after the date of the positive test.
 1. If asymptomatic, a negative rapid antigen COVID test on day 6 (taken the morning before school) is sufficient for return on day 6
 2. If symptomatic, a negative rapid antigen COVID test on day 5 and 7, and symptoms resolved is sufficient for return on day 8
 3. Anyone who returns before day 10 must wear a mask until 10 days after the date of the positive test.
- ii. Option 2. Remain at home for 10 days after the positive test. Return to school on day 11 without a test as long as symptoms are improving. No mask is needed upon return to school.

c. Flow Chart for response:



Procedure for cases of COVID-19 exposure outside of the school

a. Procedure for notifying school:

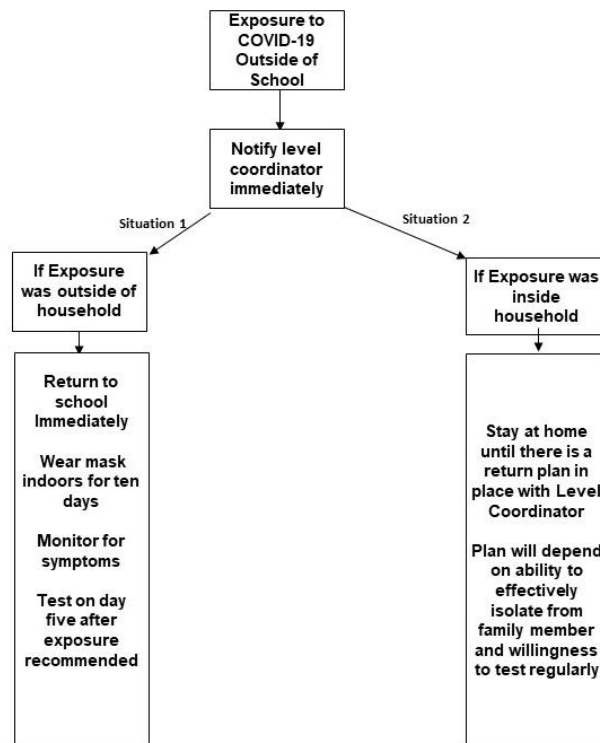
- i. Parents of any student who has been exposed to COVID-19 outside of school should complete the ParentSquare COVID Exposure/Case Reporting Form and their Level Coordinator will be in contact as soon as possible on the next regular school day. This form is accessible through the Links tab on your Parent Square App (under EXPLORE). Full instructions on this will be shared before the first day of school.
- ii. Any faculty or staff member who has been exposed to COVID-19 outside of school should immediately contact their Level Coordinator, using email and a text, to inform them and start the response process.

b. Attending school after an exposure outside of school:

- iii. If the exposure was to someone NOT sharing a household with the exposed individual – such as at a friend’s house, or at a community event – the individual (whether student or faculty/staff member) can attend school with the following precautions:

1. Closely monitor for any symptoms, and stay home if any develop, until a rapid antigen test or PCR is negative
 2. Exposed person must wear a mask indoors at school for ten days after exposure.
 3. We encourage testing with a COVID rapid antigen test on day 5 to check for infection. The school can provide this test to parents and faculty/staff.
- iv. If the exposure was within the household, for instance the parent of a student or partner of an employee, then the student or employee should remain home until a return plan is in place with the Level Coordinator. This means that this individual should stay home for the first day after completing the COVID reporting form. When the exposed individual can return to school will depend on
1. Whether the individual can effectively isolate from the COVID positive individual in their household.
 2. Whether the individual is comfortable with testing daily or every-other day for COVID while attending with a positive household member (school will provide these tests).

c. Flow chart for out of school exposure:



E. Procedure for cases of COVID-19 exposure at school

- a. Procedure for notifying community: All community members will be informed when there has been an on-campus exposure from a positive case of COVID-19. Employees and parents will be informed through ParentSquare on the day that RSSAA learns of an exposure. Full information on which group was exposed and when the exposure took place will be shared with everyone. The name of the positive student or employee will only be shared with those in direct contact with the positive individual.
- b. Students who have been exposed in the classroom may attend school as long as they are asymptomatic and arrive with a mask and understand that they must wear it at school while indoors until 10 days after the exposure.
- c. For the 2022-23 School Year, the school will not be implementing a quarantine or test-out of quarantine system for students exposed to COVID-19 at school. Parents will be asked to monitor students for symptoms and to test whenever there is concern that a student might have COVID-19. This is especially important when there has been a school exposure.
- d. After a school exposure, RSSAA will provide test kits to parents who would like them. These at-home rapid antigen tests will be available for pick up from the school and should be used only for the student. We will provide these for as much of the school year as we can, until our supply runs out. We do not anticipate the supply from the State of Michigan continuing for the full year. We encourage families to take advantage of free test programs available through the US mail and State of Michigan. Details are below. Parents are required to report both negative and positive results to their Level Coordinator because RSSAA received these tests from the State of Michigan to support the ongoing operation of schools and childcare programs and we are required to report their use.
 - i. Reporting a Positive Test: If a school-provided test is positive, parents need to report the test date, student name and some demographic information to the Level Coordinator
 - ii. Reporting a Negative Test: If an RSSAA-provided test is negative, parents need to report the test date and student name.
 - iii. RSSAA will provide tests as long as possible, but families who have their own tests will help extend our supply. Free, at home tests can be ordered at:
 1. <https://www.covid.gov/tests>
 2. <https://accesscovidtests.org/>

F. Details around testing for COVID-19

- a. Students and employees who have tested positive for COVID-19 will need to have a negative rapid antigen or PCR test if they wish to return before day 10 (see section D).
- b. Return plans for individuals who are exposed to a positive COVID-19 case within their

own households may include agreement about regular testing if the student or faculty/staff member attends school.

- c. RSSAA will be implementing regular testing of student athletes throughout their athletic seasons for the 2022-23 school year. Students on all school teams that compete and/or train inside will be tested twice a week from the beginning of organized practice to the end of the season.
- d. RSSAA will be offering regular and at-request testing of faculty and staff on both campuses. All faculty and staff will be offered testing weekly and are highly encouraged to participate.
- e. RSSAA will be implementing a test program for all classes traveling overnight during the 2022-23 school year. All students, school employees, and chaperoning parents will be tested two days prior to the trip and the morning of the trip. Any positive tests will be checked with a PCR test and a confirmed positive individual will not be able to participate in the trip.