

RSSAA 2022-23 COVID Policies

Effective November 28, 2022

The Rudolf Steiner School of Ann Arbor seeks to ensure that all students, faculty, staff and families are able to fully engage in a rich curriculum and community life, while also responsibly ensuring that COVID precautions are in place across our programs. We have been monitoring COVID-19 within our school community since the first day of school in September, and, with the input of community members, we are updating our policies to these below. We will continue to track what is happening in the school, and listen to all members of our school community, and will continue to adjust and update as our experiences and any directives from the State and County Health Departments require. We will always include all community members – parents, guardians, faculty and staff – in our decision-making process around changes.

Starting on Monday, November 28, 2022, the following COVID-19 Expectations will be in place:

A. Masks:

- a. Masks will be optional both inside and outside on both campuses, except in the following situation:
 - Anyone who returns to school before day 11 after a positive COVID-19 test will be expected to wear a mask until day 11 after the positive test.
- b. When needed, masks should ideally be equivalent to N95 (KN95) masks, and at a minimum have two or more layers of washable, breathable fabric, or be surgical, multi-layer disposable paper masks; completely cover the nose and mouth; fit snugly against the side of the face and have no gaps.

B. COVID-19 Mitigation Strategies:

- a. Social Distancing: During the 2022-23 School Year RSSAA will return to our conventional delivery of school curriculum and experiences. This means the following:
 - i. Lower School Classes (Early Childhood Program and Grades 1 – 8) will be allowed to mix outside during recess and for occasional festival and performance events. Middle School students will be mixed for music classes.
 - ii. High School Students will be allowed to mix indoors including at lunch.
 - iii. Across both campuses we will be using all regular school spaces and classrooms.
 1. The Parent Spot will reopen at the Lower School campus to allow parents to meet throughout the school day
 2. High School classes will take place in the classroom spaces as they did pre-pandemic. Each grade will occupy a main lesson classroom during a block and switch to a new room at the end of the block. Specialist classes will occur in consistent classroom spaces throughout the year that may be used by other classes during the school day. The grades will not have individual homerooms. Students will not be allowed to eat

in classroom spaces but will use the commons and outside areas. The Assembly Hall will no longer be used for regular classes but will revert to a music and drama practice space.

- iv. Parents are again welcome in both buildings throughout the school day –as normal we ask that parents check in at the front office and allow school employees to retrieve students from classrooms for you.
- v. This year we will not be offering any remote education options. Students who have COVID will be supported as all ill students are. They will be encouraged to take time off to recover and will work out an individual plan (depending on the grade and subject) with their teachers upon their return. We will not be implementing a quarantine or test out of quarantine program this year. This means that we will not be streaming classes in the Middle and High School or providing work packets in the Lower School.
- vi. We will be offering both Before and Aftercare programs at the Lower School and there will be an After School program at the High School.

b. Cleaning and air circulation

- i. During the first two years of the pandemic the school has upgraded our air circulation and cleaning protocols – these will all be continued for the 2022-23 school year
- ii. Students will continue to be encouraged to regularly wash their hands with soap and water and to use hand sanitizer when appropriate.

C. Expectations When Potential Symptoms of COVID-19 Develop

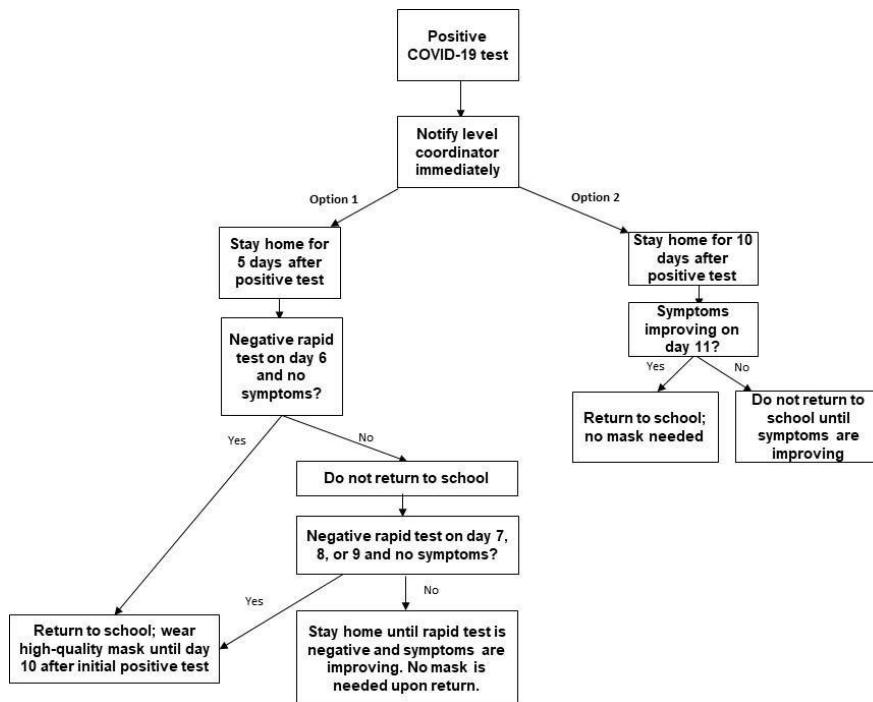
- a. The school will not be using any symptom-tracking app during the 2022-23 School Year. However, all RSSAA community members are asked to monitor themselves, and their children, for any symptoms of COVID-19 and to be conservative when there is any concern about possible COVID infection.
- b. If students have potential symptoms of COVID-19, parents should administer a home rapid antigen COVID-19 test or a COVID-19 PCR test. They should not bring students back to school unless the test is negative AND symptoms are improved. Tests are available from school if you would like them.
- c. If faculty or staff have potential symptoms of COVID-19, they should take a home rapid antigen COVID-19 test or a COVID-19 PCR test. Faculty and staff should not return to school unless the test is negative AND symptoms are improved.

D. Procedure for confirmed COVID-19 cases

- a. Procedure for notifying school
 - i. Parents of any student who tests positive for COVID-19 should complete the ParentSquare COVID Exposure/Case Reporting Form and their Level Coordinator

will be in contact as soon as possible on the next regular school day. This form is accessible through the “Links” tab on your Parent Square App (under EXPLORE). Parents should keep the positive-testing student home until the conversation with the Level Coordinator is complete and a plan is in place.

- ii. Any faculty or staff member who tests positive for COVID-19 should immediately contact their Level Coordinator, using email and a text, to inform them and start the response process. Faculty and staff should stay home until the conversation with the Level Coordinator is complete and a plan is in place.
- b. Procedure for returning to school: Any student, faculty or staff member who tests positive for COVID-19 will have two options. These options are shown in the flow chart below.
- i. Option 1: stay home for a minimum of 5 days after the date of the positive test.
 1. If asymptomatic, a negative rapid antigen COVID test on day 6 (taken the morning before school) is sufficient for return on day 6
 2. If symptomatic, a negative rapid antigen COVID test on day 5 and 7, and symptoms resolved is sufficient for return on day 8
 3. Anyone who returns before day 11 must wear a mask for 10 days after the date of the positive test.
 - ii. Option 2. Remain at home for 10 days after the positive test. Return to school on day 11 without a test if symptoms are improving. No mask is needed upon return to school.



- E. Procedure for cases of COVID-19 exposure in a student or faculty/staff household
- a. Procedure for notifying school:
 - i. Parents of any student who has been exposed to COVID-19 within their household should complete the ParentSquare COVID Exposure/Case Reporting Form and their Level Coordinator will be in contact as soon as possible on the next regular school day. This form is accessible through the Links tab on your Parent Square App (under EXPLORE).
 - ii. Any faculty or staff member who has been exposed to COVID-19 inside their household should immediately contact their Level Coordinator, using email and a text, to inform them and start the response process.
 - b. Attending school after an exposure within the household:
 - i. The student or employee may attend school after a household exposure.
 - ii. The student or employee will be encouraged to isolate from the positive family member as much as possible
 - iii. The student or employee will be encouraged to wear a mask until day 5 after either their last contact with the positive family member **or** the family member has a negative test.
 - iv. It is very important that the exposed person is monitored for any symptoms, and tested if symptoms develop.

F. Procedure for cases of COVID-19 exposure at school

- a. Procedure for notifying community: All community members will be informed when they or their child has been exposed to a positive case of COVID-19 at school. Employees and parents will be informed through ParentSquare on the day that RSSAA learns of an exposure. The name of the positive student or employee will no longer be shared with the exposed individuals; however, parents and adults will be encouraged to share the information with anyone who might have had a significant exposure (carpooled or had a play date for instance).
- b. Students who have been exposed in the classroom may attend school if they are not symptomatic. They can choose whether to mask or not, masking is optional
- c. For the 2022-23 School Year, the school will not be implementing a quarantine or test-out of quarantine system for students exposed to COVID-19 at school. Parents will be asked to monitor students for symptoms and to test whenever there is concern that a student might have COVID-19. This is especially important when there has been a school exposure.
- d. After a school exposure, RSSAA will provide test kits to parents who would like them. These at-home rapid antigen tests will be available for pick up from the school and can be used by any family members.

G. Details around testing for COVID-19

- a) Students and employees who have tested positive for COVID-19 will need to have a negative rapid antigen or PCR test if they wish to return before day 11 (see section D).
- b) For the winter sports season RSSAA will no longer be implementing regular testing of student athletes. Parents and student athletes are asked to monitor for symptoms and self-test for COVID when there are symptoms.
- c) RSSAA will continue to implement a test program for all classes traveling overnight during the 2022-23 school year. All students, school employees, and chaperoning parents will be tested two days prior to the trip and the morning of the trip. Any positive tests will be checked with a PCR test and a confirmed positive individual will not be able to participate in the trip.