

Inspiration from 100 years of Waldorf education

Just as the human-centered approach of Waldorf education emerged in 1919 from the devastation of World War I, one-hundred years later we are experiencing a world-wide cultural transformation that will have tremendous impacts on society. Rudolf Steiner’s verse to the first Waldorf teachers evoked a timeless sensibility:

*Imbue yourself with the power of imagination,
Have courage for the truth,
Sharpen your feeling for the responsibility of soul.*

It has served Waldorf teachers ever since, as a way of staying true to the values of Waldorf education while adapting to needed change. With the power of imagination, a deep well of courage and a sense of responsibility to community, RSSAA recognizes that our role as educators is to provide joy, connection, and hope in these changing times.



RUDOLF STEINER SCHOOL
OF ANN ARBOR



“Waldorf education is that hug that says you are brilliant, you are beautiful, you are wonderful. Relax, it’s going to be ok.”

Mike McFall
Board Member and Parent

“What I really appreciate about Waldorf education is every student’s respect for the other person. They value those relationships, it’s just marvelous. I appreciate it all.”



Wanda Mumford-Maturo
Grandparent

“I like the quote ‘seeing the world through rose-tinted glasses’ because that is like being an optimist and it’s also reflective because our world is turned upside down right now, but we’re still being optimistic about it.”



Elise Coulthard, Class of 2020



33% of our families received
\$751,000

in tuition assistance, engaging their children
in Waldorf education.

When the pandemic and economic
downturn hit, an additional **\$142,000** was
given to support families' increased needs.



Our alums are active in giving their
time and money to our school. Five alum
have been helping our sports program, six
were part of alum panels at a virtual Seyhan
Symposium: Alum Career Paths, and 41 alum
and 33 alum parents gave back to the school
that they love, raising \$32,452 on the Alumni
Day of Giving.

We continue to break fund-raising records with
Annual Fund raising \$210,215 with 381 donors.

**99% of families and
100% of full-time faculty** contributed.



23 Alumni Parents
reminisced at both the HS
Alumni Parent Luncheon and
LS Alumni Parent Luncheon
with Yoni Paz, Annie Maniglia
(Fox) ('06) and Karen Sheridan.

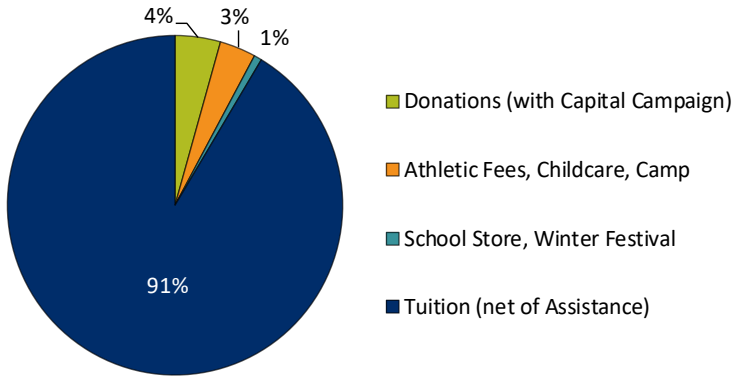


18 teachers brought back to
their classrooms, innovative
approaches to the curriculum
through **professional
development** coursework.

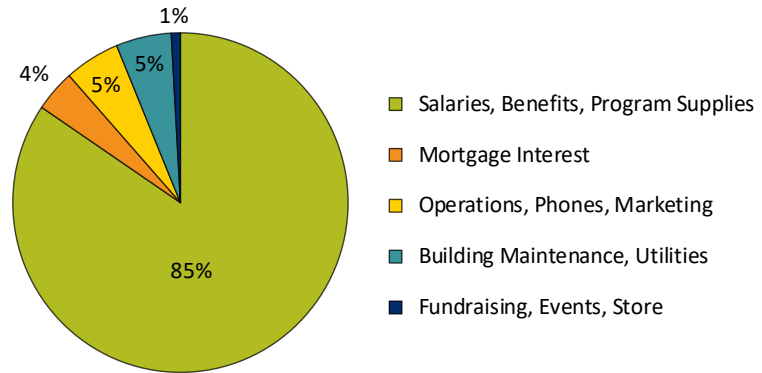


Our Budget Reflects a Commitment to Faculty and Programs that Support Our Community

REVENUE



EXPENSES



Beyond the Numbers

The resilience of our community came shining through.



Emotional and Financial support for families with additional needs.

Enriching and innovative on-line learning.



Teacher's love for their students as rites of passage through each grade were reimaged.

Parent's love for their children navigating new experiences.





“Having the support of very experienced Waldorf teachers through those three trainings I took in the summer before every grade was invaluable. I feel that having access to really experienced Waldorf teachers who had done it twice through and then that cohort of teachers, was really helpful.”

Anna Kamitses, Grade 3 teacher

“I was a professional engineer in the automotive industry before becoming a high school science and math teacher. I spent 3 weeks in New Hampshire at the Center for Anthroposophy working on a degree program for high school Waldorf education. I find that it’s enriching and enlivening for me and my teaching. I really appreciate the support from our community for professional development, particularly as a new teacher. “



Noelle Frerichs, HS Science and Math



“Why does a Waldorf school consider art as important as math? We teach art in our school not because we think that every student will become an artist, but we do know that they will be the most artistically educated engineers, computer scientists, environmentalists, teachers, business people, doctors, ministers of education, technologists, and healthcare workers.”

Elena Efimova, HS Fine Arts Teacher

“The Southeast Michigan Stewardship (SEMIS) coalition that I joined a year ago - I absolutely love. I was connected to local organizations and they’ve helped with planning a place-based education and getting familiar with the community in which we live. I’m grateful that I’ve had the opportunity to do the things I’ve done.”



Tara McKnight, Grade Four Teacher

Our vision for the future

Build an endowment & stability fund to strengthen our school for tomorrow and for years to come.
YOU CAN HELP.

Please contact Katrina Klahake, Development Director
kklahake@steinerschool.org or 734-669-9394